

Esri Deutschland



**Esri Deutschland Group GmbH
Kranzberg**
Esri Deutschland GmbH Kranzberg
Niederlassung Berlin
Niederlassung Bonn
Niederlassung Hannover
Niederlassung Köln
Niederlassung Leipzig
Niederlassung Münster

con•terra

con terra GmbH Münster

geocom

Geocom Informatik AG Burgdorf

Standort Nyon
Standort Zürich

Geocom Informatik GmbH Kranzberg

Standort Hamburg
Standort Köln



Lars Behrens

Account Manager Natur,
Umwelt und Ressourcen

L.Behrens@esri.de

esri Suisse

Esri Schweiz AG Zürich
Niederlassung Nyon

esri Rwanda

Esri Rwanda Ltd. Kigali

esri Burundi

Esri Rwanda Ltd. Kigali



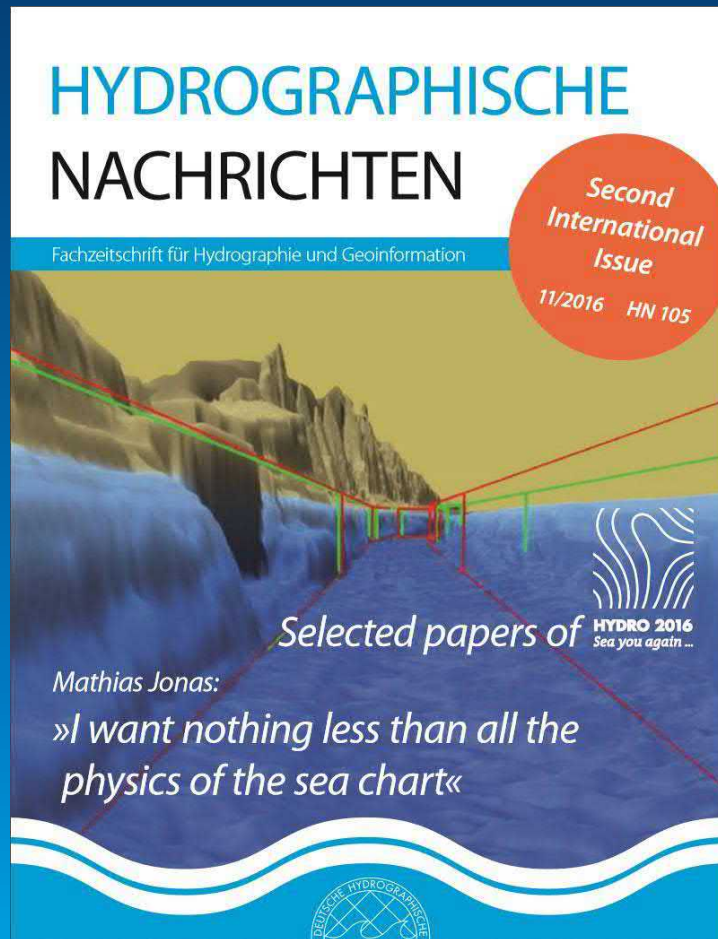
Hydrographische Daten verlässlich und zeitnah über GIS und Apps

Lars Behrens, Esri Deutschland GmbH

Hydrographentag 2017

Flensburg

Öffnung der hydrographischen Daten ?



Anywhere, any time, any device ?

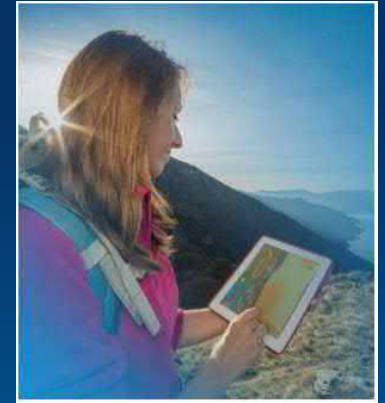


“Consumerization of IT”

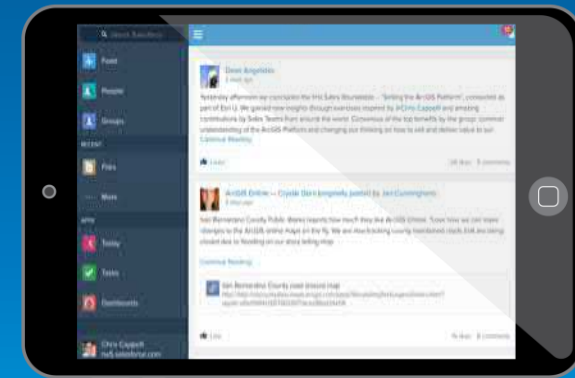
58%
besitzen ein
Smartphone



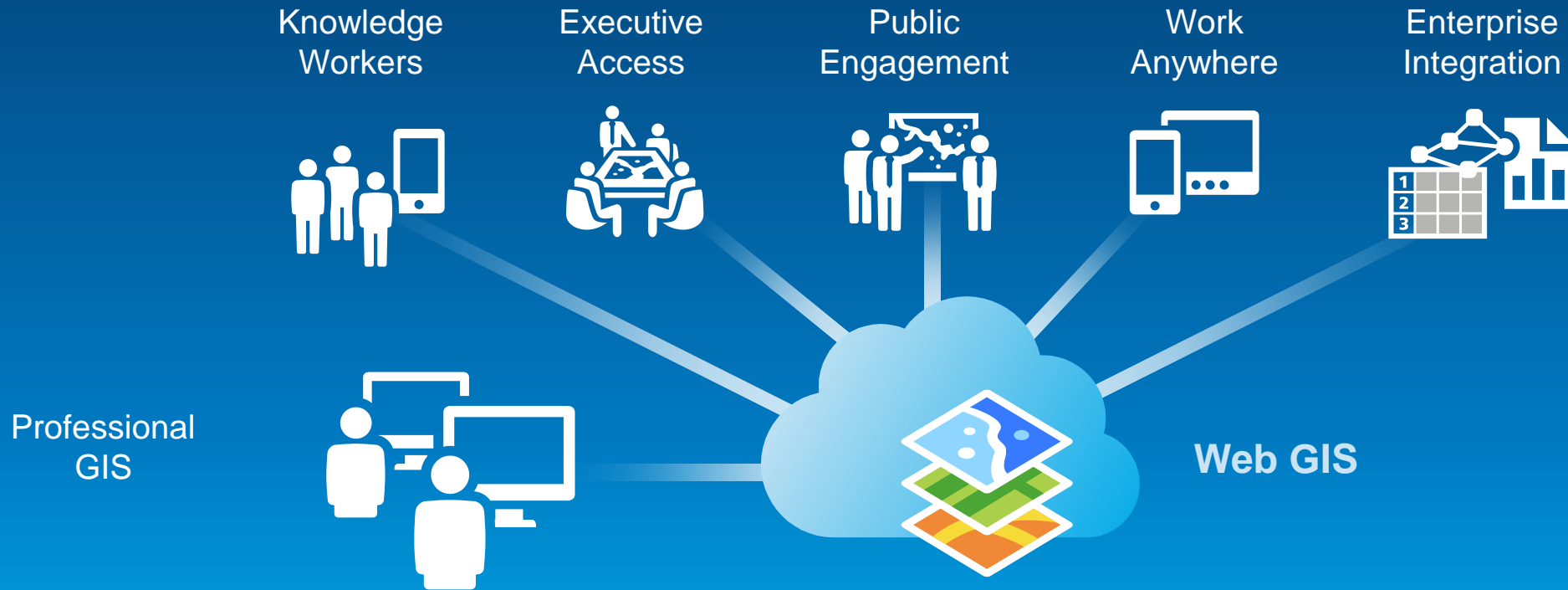
87%
Nutzen das Internet



2.8
Geräte pro Person



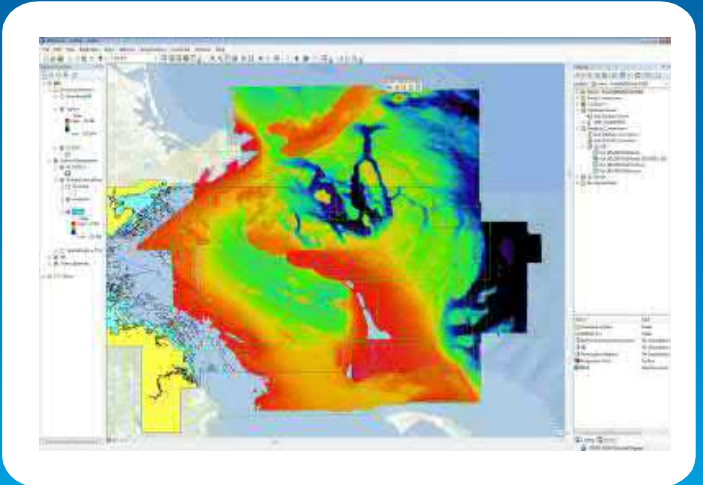
(Web)GIS: Vom Experten zur breiten Nutzung



GIS Experte: Datenmanagement und Kartenproduktion auf dem Desktop



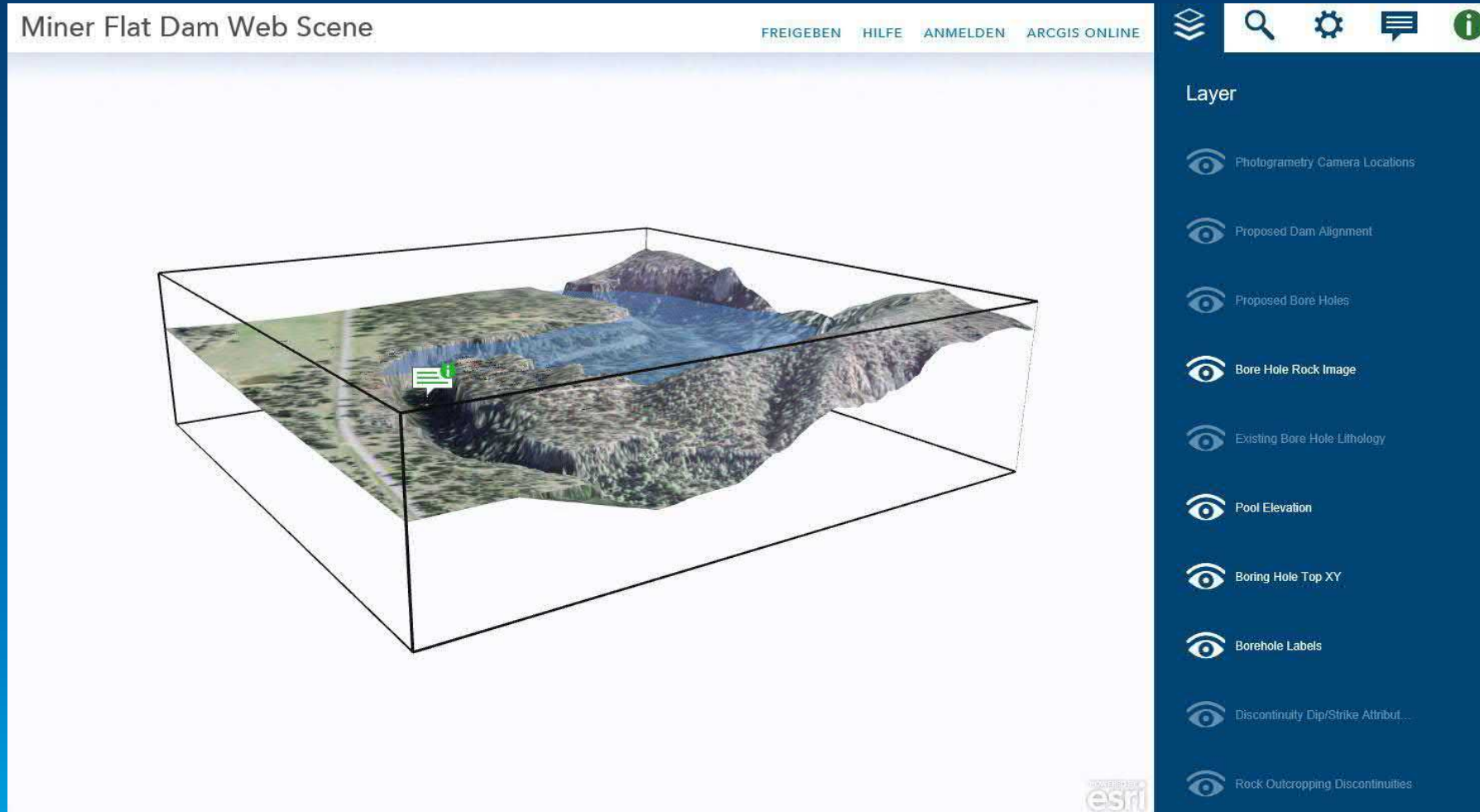
GIS Analyst: Analysieren, Erstellen und Visualisieren



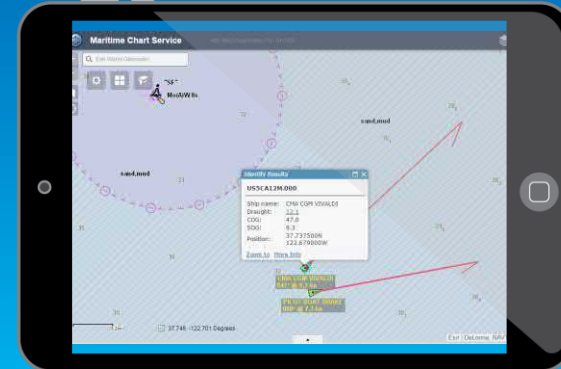
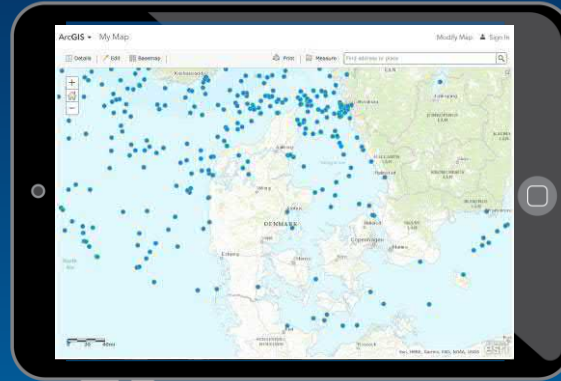
Planer: Planen, Sichten und informieren



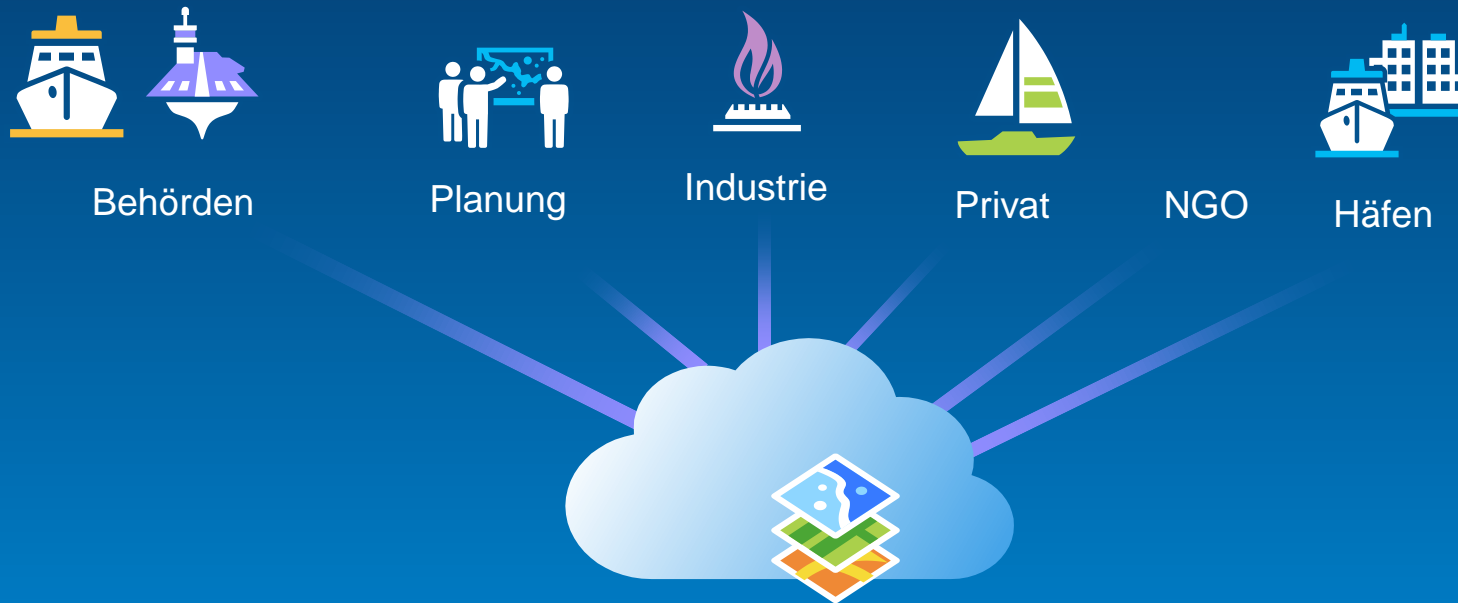
Entscheider: verstehen und bessere Entscheidungen treffen



Karten konsumieren – anywhere, any time, any device



Akteure und Nutzer mariner Dateninfrastrukturen



Nutzerszenarien

- Anti-Piraterie
- Militärische Operationen
- Sicherheitsbehörden
- Rohstoffabbau
- Geodateninfrastrukturen
- Windparks
- Hafenmeister
- Inventarisierung von Anlagen
- Reiseplanung
- Lotsendienst
- ...
- ...

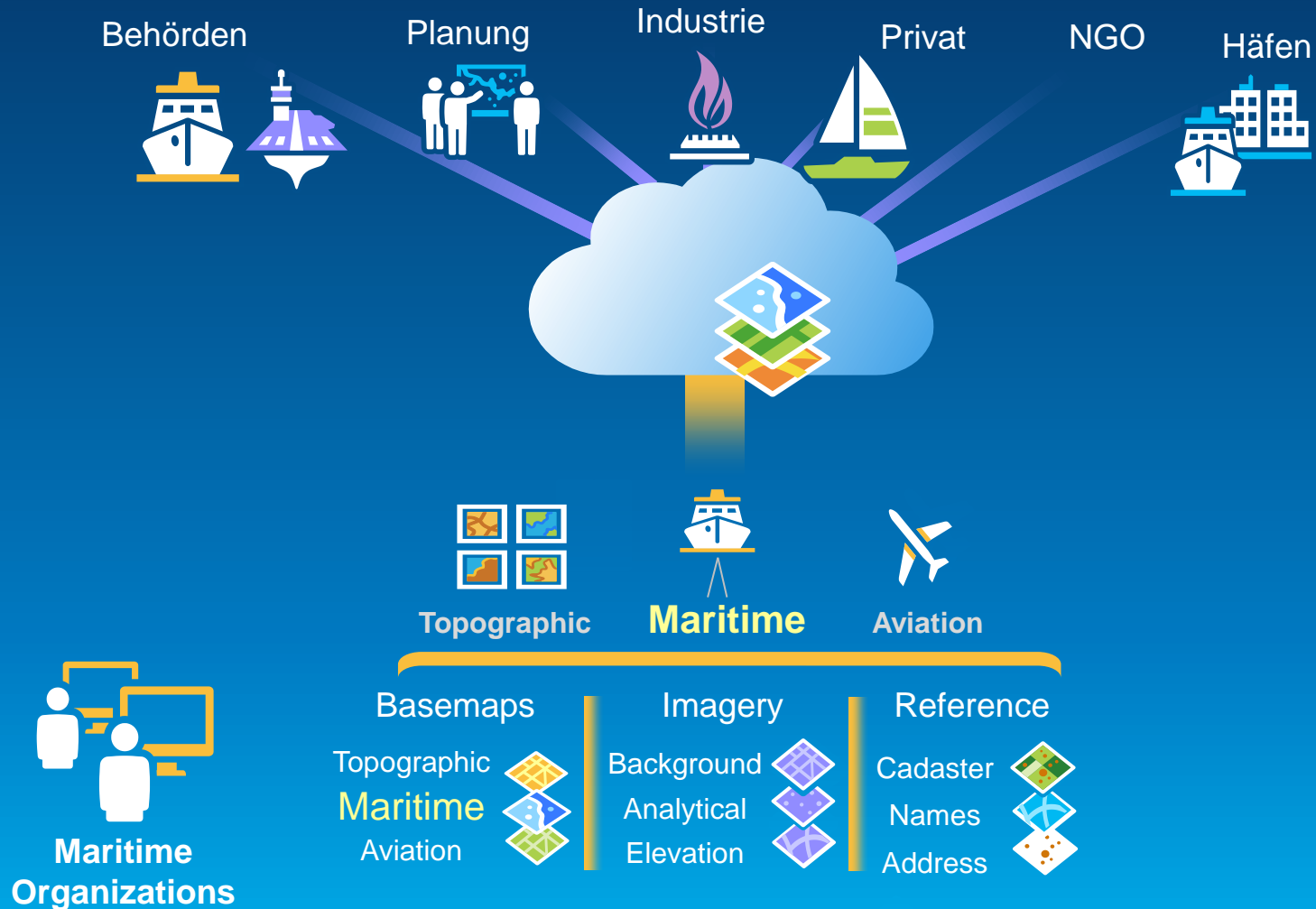
Aktuelle Herausforderungen

Sinkende Budgets

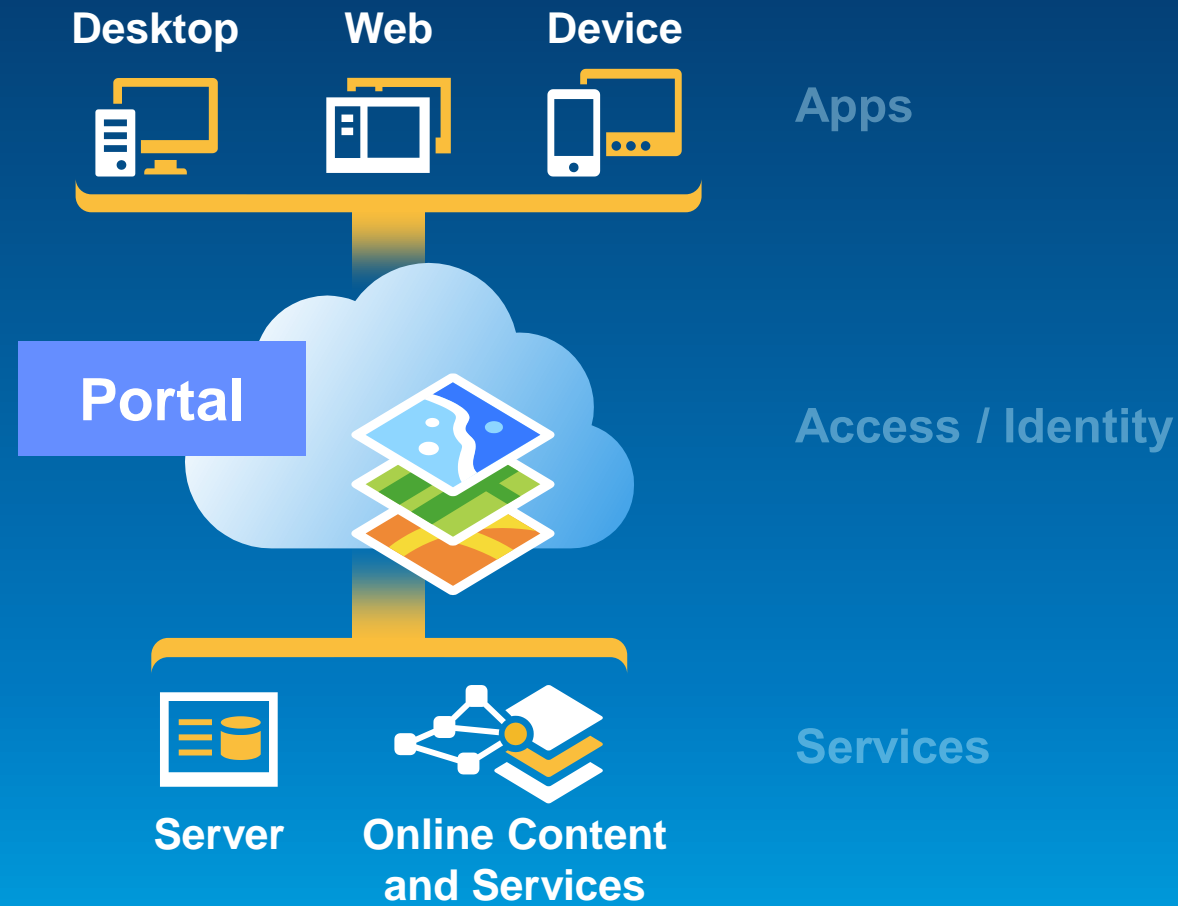


Neue Produktanforderungen

Teilen und Zusammenarbeiten



Marine Dateninfrastruktur



Karten in einem Portal präsentieren

Home Gallery Map Scene Groups

Sign In

Esri Hydrographic Office

Featured Maps and Apps

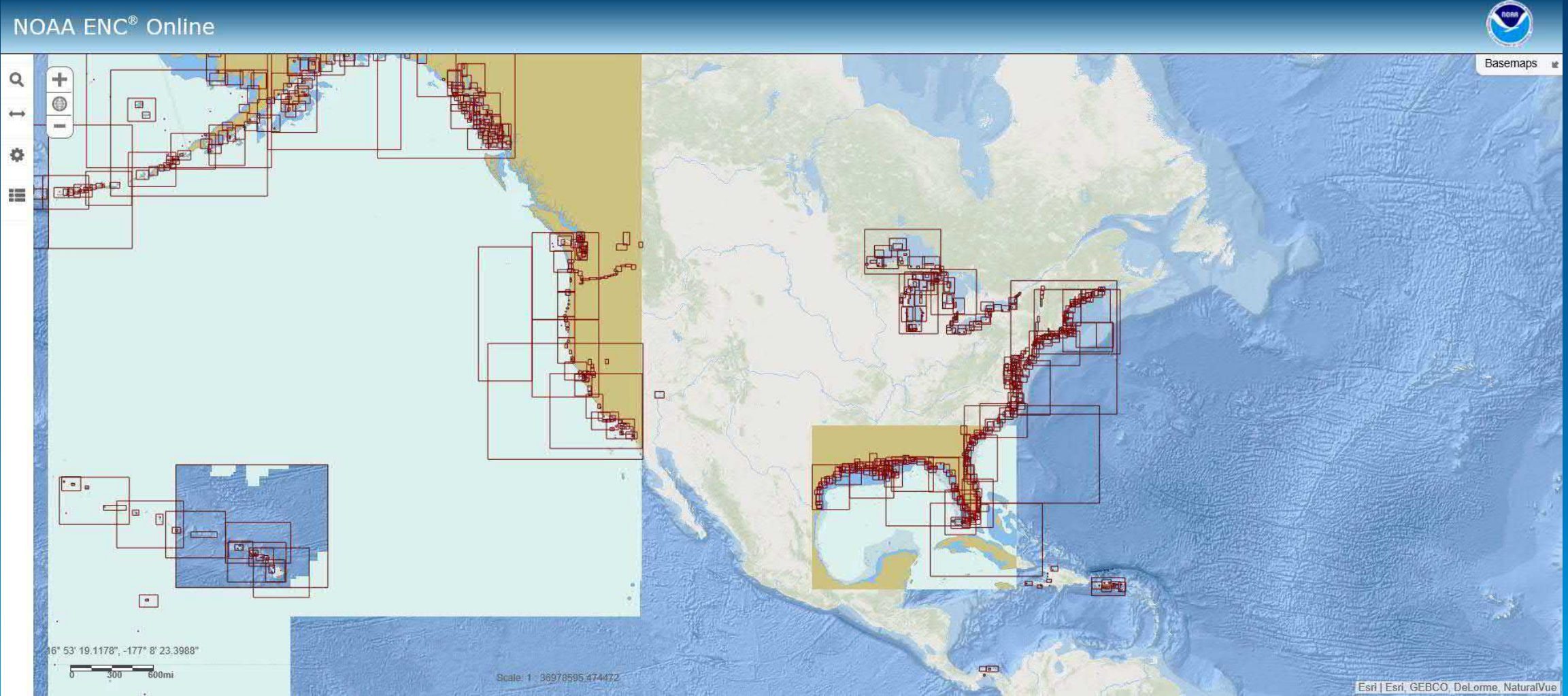
- Compare Vector ENC and Tile ENC data
- Maritime Server supports economic growth
- Navigational Aids Inspection System (Using Tiled MCS)
- South Carolina Offshore Renewable Energy Planning

Welcome to the Maritime (Demo) Organizational Site.

This is a fictional organization designed to demonstrate the capabilities of ArcGIS for Maritime Organizations. ArcGIS Online allows you to create special interest groups, create and share maps, embed maps in websites and blogs, or share applications. ArcGIS Online provides a simple way to increase your organizations online presence.

Esri.com | Help | Terms of Use | Privacy | Contact Esri | Contact Us | Report Abuse

Beispiel: NOAA ENC online




Beispiel: Geoseaportal BSH

GeoSeaPortal

Enter search term...

Info Basemap: DE Login

What do you want to do? ▾



News from GDI-BSH

Neuigkeiten aus der GDI-BSH - Feed (Homepage)

- [Neue Daten zur Gewässerverunreinigung, 31.03.2017](#)
- [Neue Geologie-Dienste veröffentlicht, 12.12.2016](#)
- [Abschaltung des alten Geoseaportals, 24.11.2016](#)
- [Neues Geodatenportal freigeschaltet, 12.10.2016](#)
- [Neuer Dienst "Gezeitenstrom" veröffentlicht, 16.09.2016](#)
- [Neuer Dienst Seegrenzen veröffentlicht, 12.04.2016](#)
- [BSH WMS BIO Demersal Fishes Density, 15.07.2015](#)
- [BSH WMS Seabird Density, 26.06.2015](#)
- [BSH WMS Gezeitenstrom Positionen, 20.03.2015](#)
- [Dienste zum Thema Schiffsverkehr, 05.12.2014](#)
- [BSH WMS Seevermessung Meeresboden DGM, 03.12.2014](#)
- [WMS Bundesfachplan Offshore \(BFO\), 08.07.2014](#)

Last refresh: 6/20/2017, 4:49 PM

Theme Gallery

- Marine Mammals
- Bathymetry
- Benthos
- Remote Sensing
- Seabirds
- INSPIRE - Water Transport Networks
- Marine Survey
- Vessel Density
- Maritime Borders
- Composition of Subsurface Sediments

Workflow

Datenerfassung



Produktion



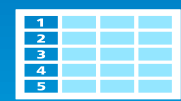
Teilen



Workflows

Features

Products



Specifications



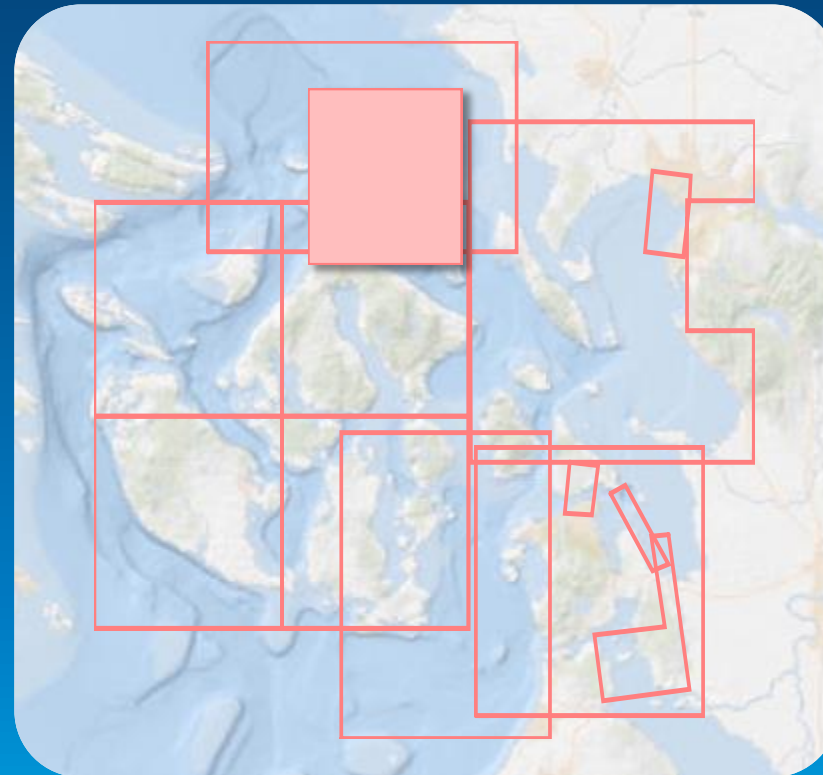
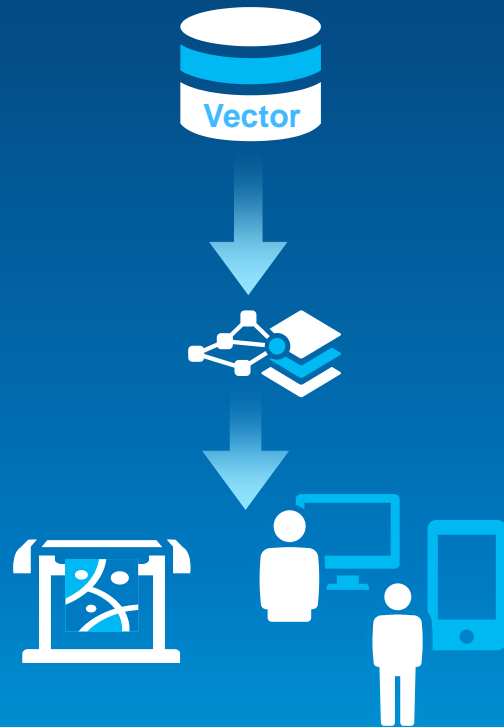
Data Models

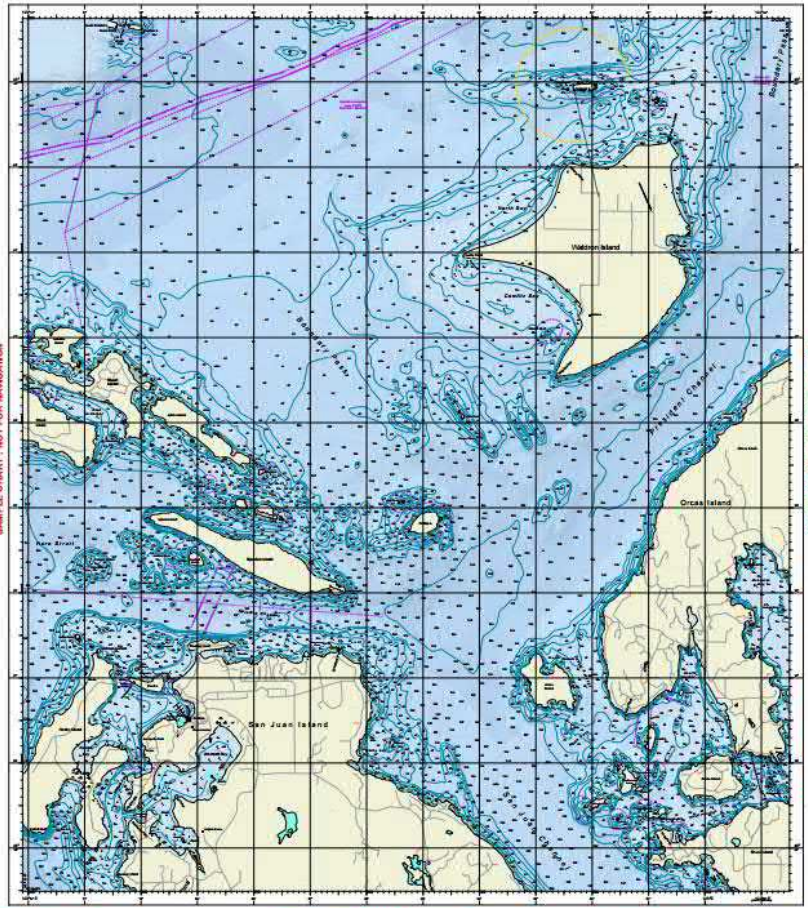


Workflows

Manage

Product on demand (PoD)



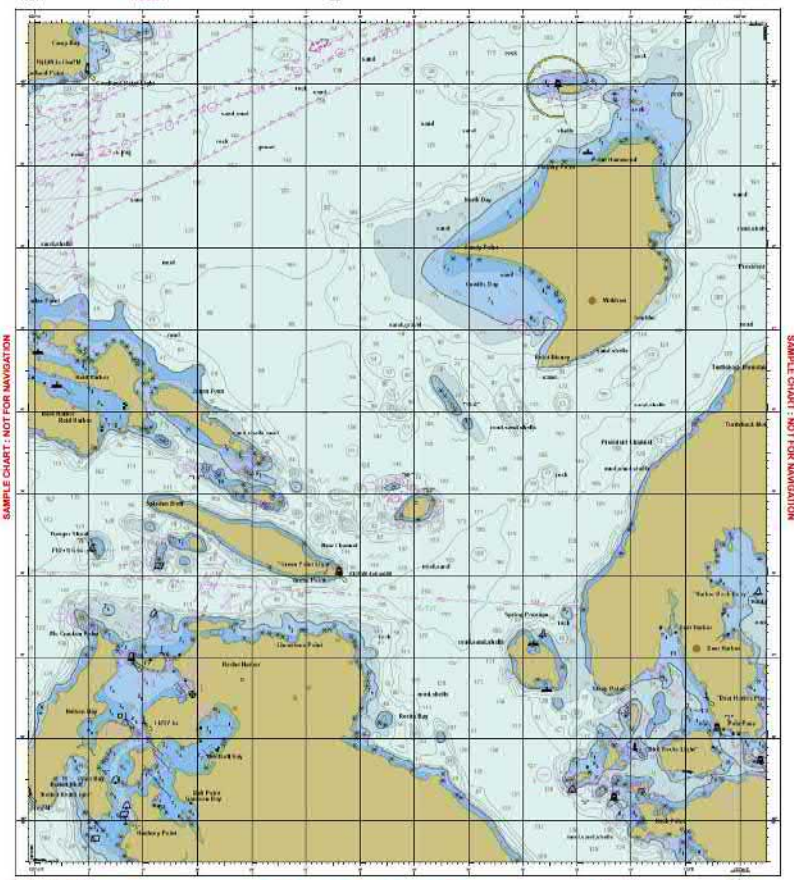


Projection Information
 North American Datum of 1983
 Scale 1:25,000 at Lat. 48° 41' 30.0000" N
 GCS: NAD 83

1:25,000 Series
 For Symbols and Abbreviations, See IHO S-5

Zones of Confidence Diagram

The legend lists various symbols used on the chart, including depth soundings, contours, and navigation markers. A scale bar indicates the chart's scale of 1:25,000. A 'Zones of Confidence Diagram' shows the accuracy of the chart's data. The NOAA logo is also present.

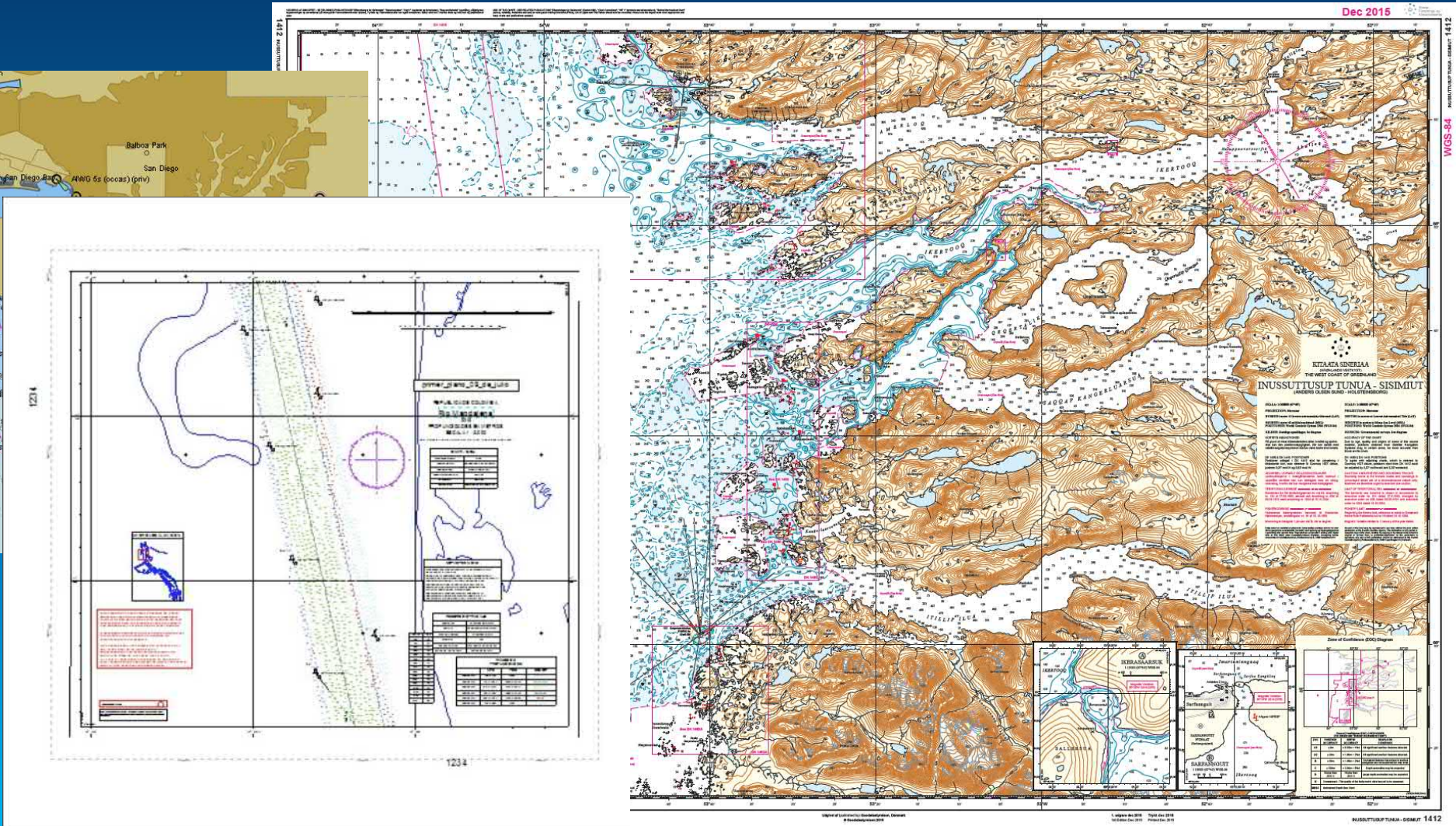
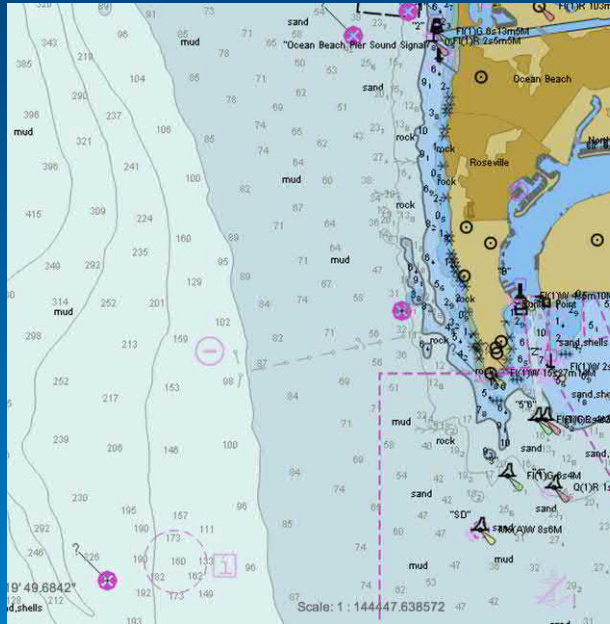


Projection Information
 North American Datum of 1983
 Scale 1:25,000 at Lat. 48° 41' 30.0000" N
 GCS: NAD 83

1:25,000 Series
 For Symbols and Abbreviations, See IHO S-5

Zones of Confidence Diagram

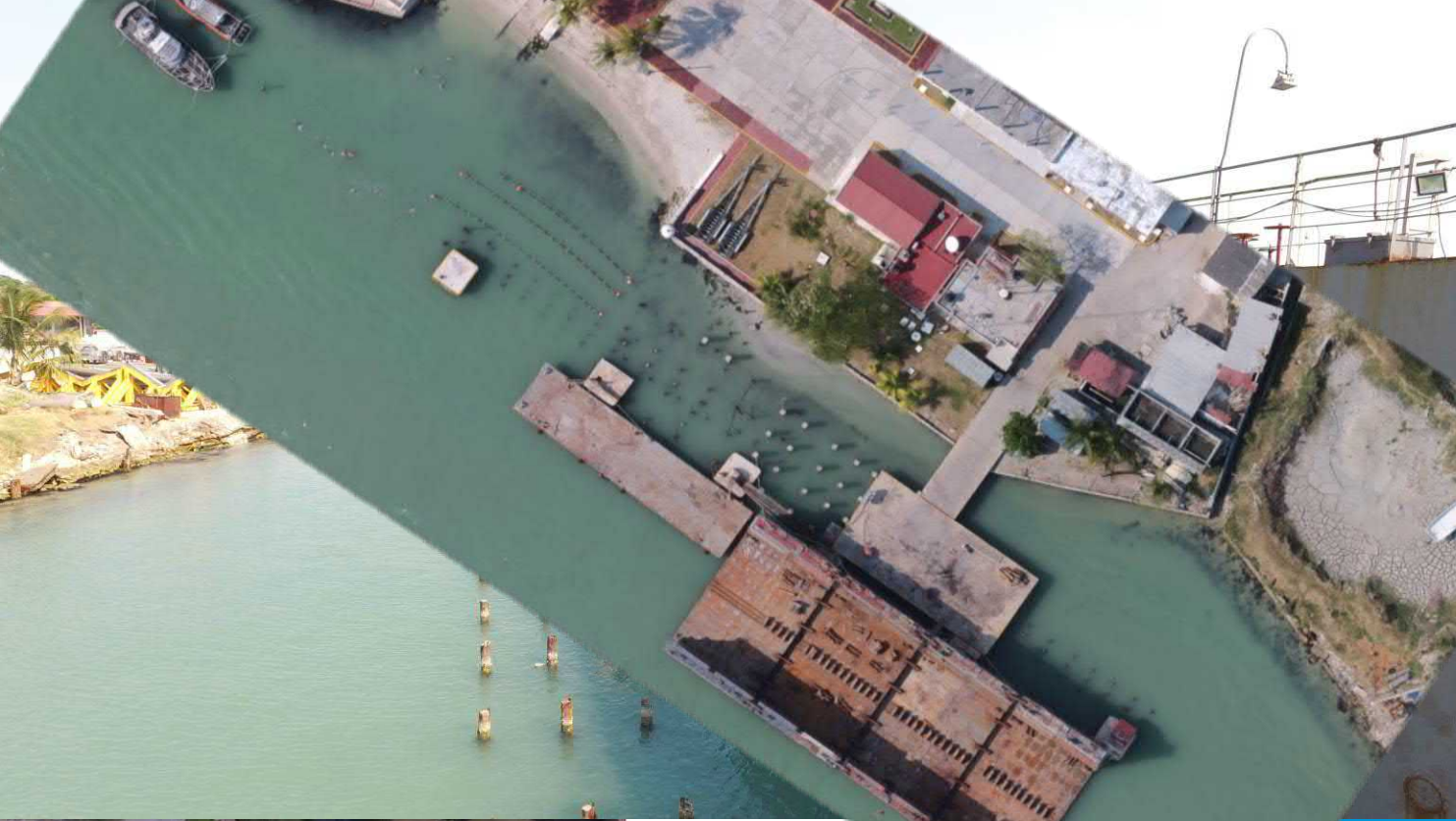
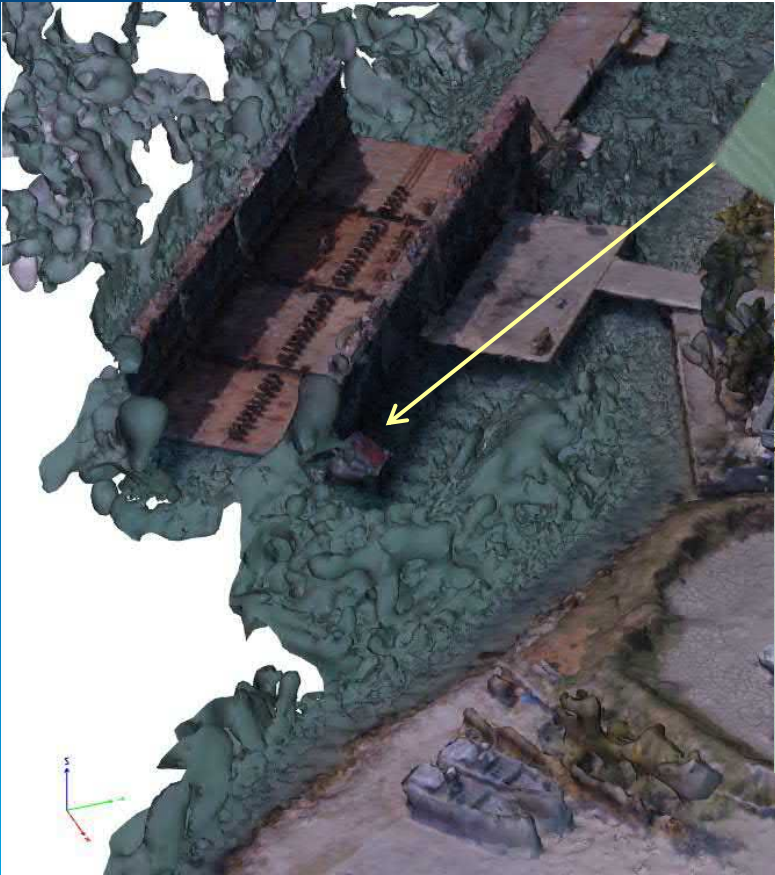
The legend lists various symbols used on the chart, including depth soundings, contours, and navigation markers. A scale bar indicates the chart's scale of 1:25,000. A 'Zones of Confidence Diagram' shows the accuracy of the chart's data. The NOAA logo is also present.



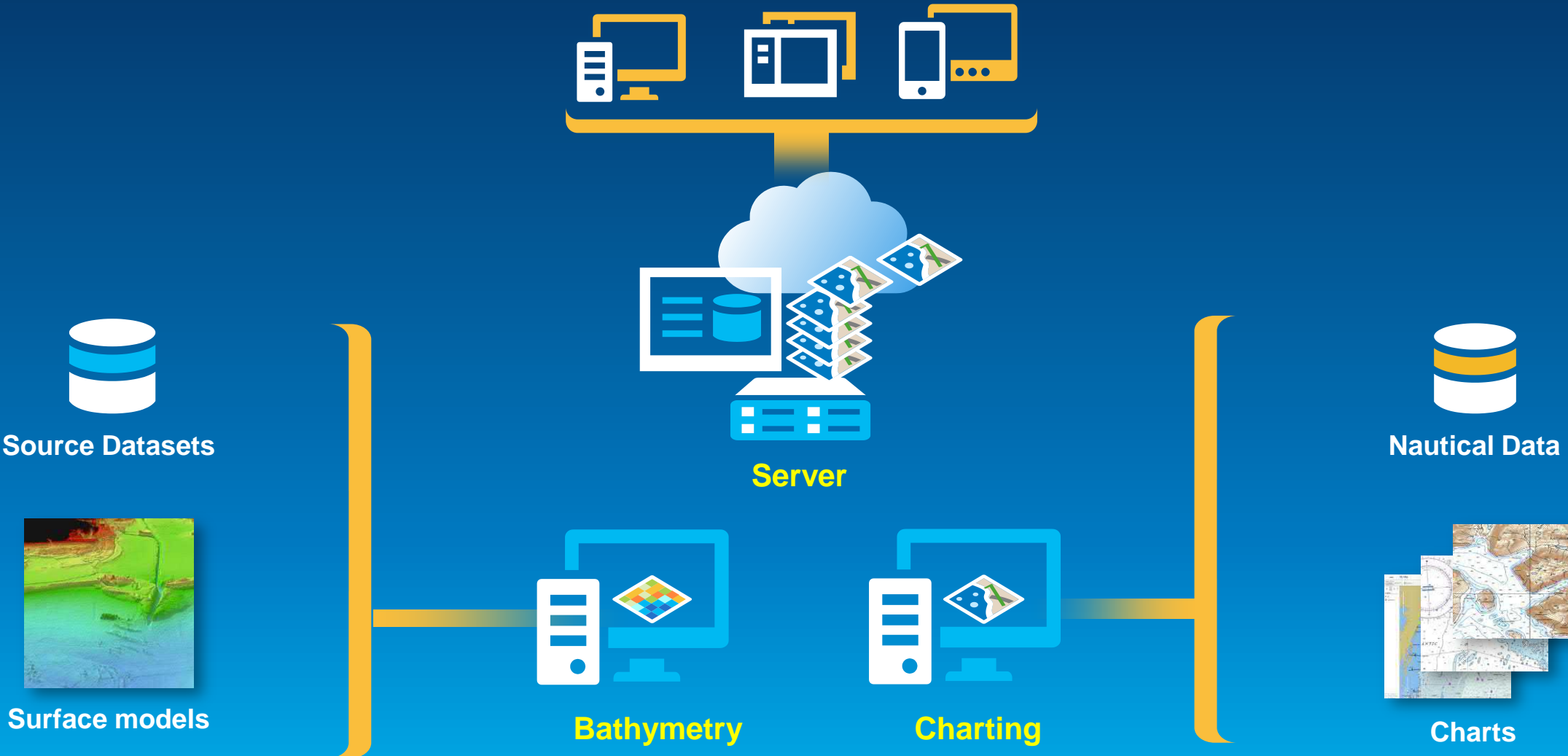
ENCs mit anderen Daten kombinieren



Orthomosaik und 3D Relief



ArcGIS for Maritime



Anywhere, any time, any device



Esri Deutschland GmbH



con•terra

con terra GmbH Münster

geocom

Geocom Informatik AG Burgdorf

Standort Nyon
Standort Zürich

Geocom Informatik GmbH Kranzberg

Standort Hamburg
Standort Köln



Lars Behrens

Account Manager Natur,
Umwelt und Ressourcen

L.Behrens@esri.de

esri Suisse

Esri Schweiz AG Zürich
Niederlassung Nyon

esri Rwanda

Esri Rwanda Ltd. Kigali

esri Burundi

Esri Rwanda Ltd. Kigali